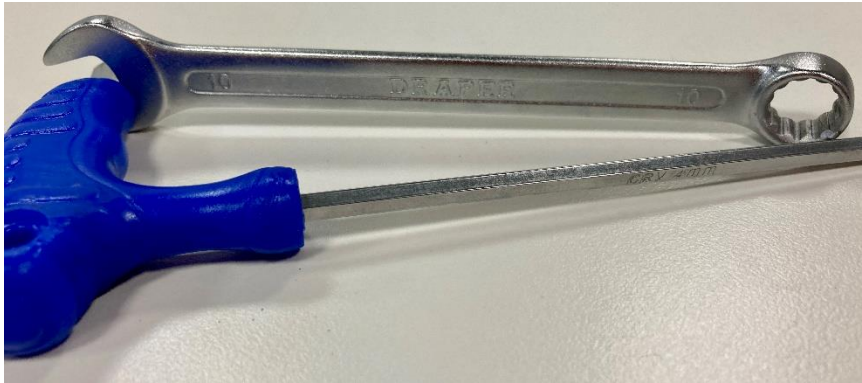


Breezy BasiX²/RubiX² Headrest Construction & Installation Guide

What you need:

- x1 Breezy BasiX²/RubiX² headrest complete with hardware and stabilizer bar
- x1 Allen Key 4mm
- x1 Spanner 10mm

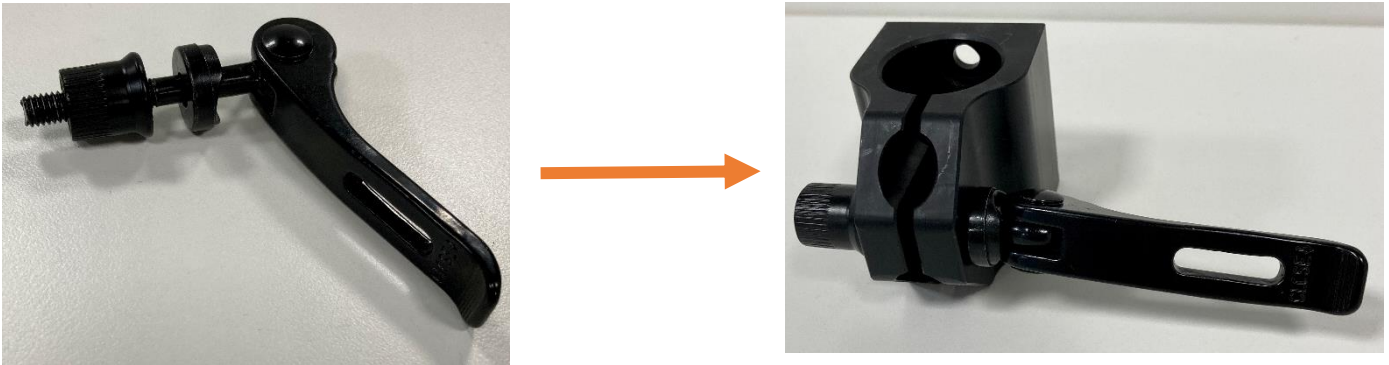


Steps:

1. Set out all equipment over workspace



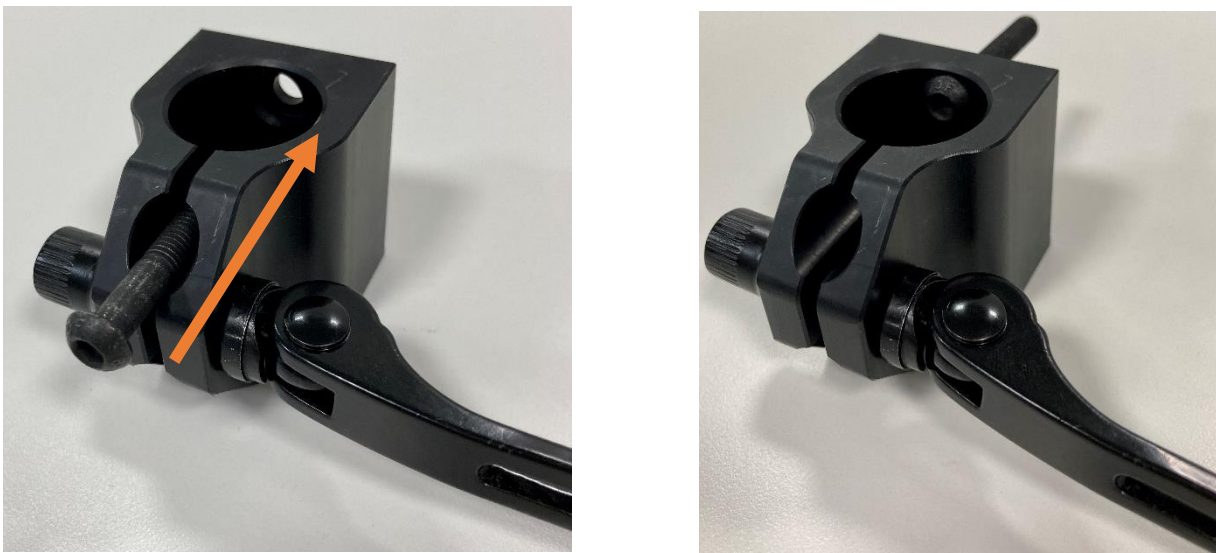
2. Unscrew 4 to remove head. Insert into hole at the rear of 3.



This will form the headrest securement on the back of the wheelchair. Depending on Carer preference, the latch can be on either left or right side.

This demonstration will be for the Right-sided latch access.

3. Insert screw 7 into top opening of 3 (as below).



4. Insert either stabilizer from 5 through this screw.



5. Line this stabilizer piece through the stabilizing bracket 1.



6. Add the remaining stabilizer piece from 5 to the other end of the screw. Secure the stabilizer bar using the screw knob and the washer 6. Using the tools, tighten the screws so that the bar remains level and doesn't move out of this position.



7. Slide headrest mount through hardware opening. To do this, the hardware latch must be released as in image below. Once through, height can be adjusted to user requirements.



8. Tighten any loose screws or knobs. Securely attach headrest and stabilizer set to Breezy BasiX² or Breezy RubiX² chair.

If you have any questions or further assistance, please contact your nominated dealership.



www.SunriseMedical.com.au

Tel: +61 2 9678 6600

Clinical@sunrisemedical.com.au



#OneSunrise
Join the community!