



# USER GUIDE

Model: KES4166-SA



# IMPORTANT SAFETY INSTRUCTIONS



Please read all of this instruction manual before using your Gilia Kettle.

Store/save this manual in a safe place for future reference.

## BEFORE USE

- Before connecting the Gilia Kettle to the power supply, check that the voltage indicated on the appliance (under the Kettle & Base) corresponds with the voltage in your home. If this is not the case, contact your Gilia Kettle Dealer and do not use the Kettle.
- This appliance has a grounding plug. Make sure the household outlet you are using is properly grounded.



Check that the cord supplied is free from defects. If the cord is damaged do not use the Kettle and contact your Gilia Kettle Dealer.

## DURING / AFTER OPERATION

- Do not operate the Gilia Kettle without water in it to avoid damaging the heating elements.
- Ensure that the Gilia Kettle is used on a firm and flat surface out of reach of children; this will prevent the Gilia Kettle from overturning and prevent damage or injury.



While water is boiling, or just after the water has been boiled, avoid contact with steam from the spout.



Do not fill the Gilia Kettle beyond its maximum safe fill of 1.5L (labeled MAX on the Dual Water Level Indicators). Boiling an overfilled Kettle risks the boiling water being ejected.



# IMPORTANT SAFETY INSTRUCTIONS

## DURING/AFTER OPERATION

- Be careful of refilling when the Gilia Kettle is hot.
- The Gilia Kettle is only for boiling water. Do not use the Gilia Kettle for anything other than the intended use.
- Do not touch hot surfaces. Use handles or buttons.
- Do not move the Gilia Kettle while it is operating.
- Do not allow children to play with the Gilia Kettle.
- Always ensure the lid is closed and do not open while water is boiling. Scalding may occur if the lid is opened during the boiling cycle.
- Make sure the cup is placed appropriately under the spout before tilting the Gilia Kettle.



Do not use components from non-designated manufacturers which could pose hazards or potential dangers to the user.

## GENERAL SAFETY INFORMATION

- The Gilia Kettle can only be used with the Base provided. The attached base cannot be used for anything other than the intended use.



Do not let the cord hang over the edge of a table or counter or touch a hot surface.



Do not place on or near a hot gas or electric burner or in a heated oven.



To protect against a fire, electric shock or personal injury, do not immerse cord, electric plugs or Gilia Kettle in water or other liquids.

- Unplug the Gilia Kettle from the outlet when not in use and before cleaning. Allow the Gilia Kettle to cool before handling and before cleaning.
- Do not operate any appliance with a damaged cord or plug or after the appliance malfunctions, or has been damaged in any manner. Return appliance to the nearest authorised service facility for examination, repair or replacement.



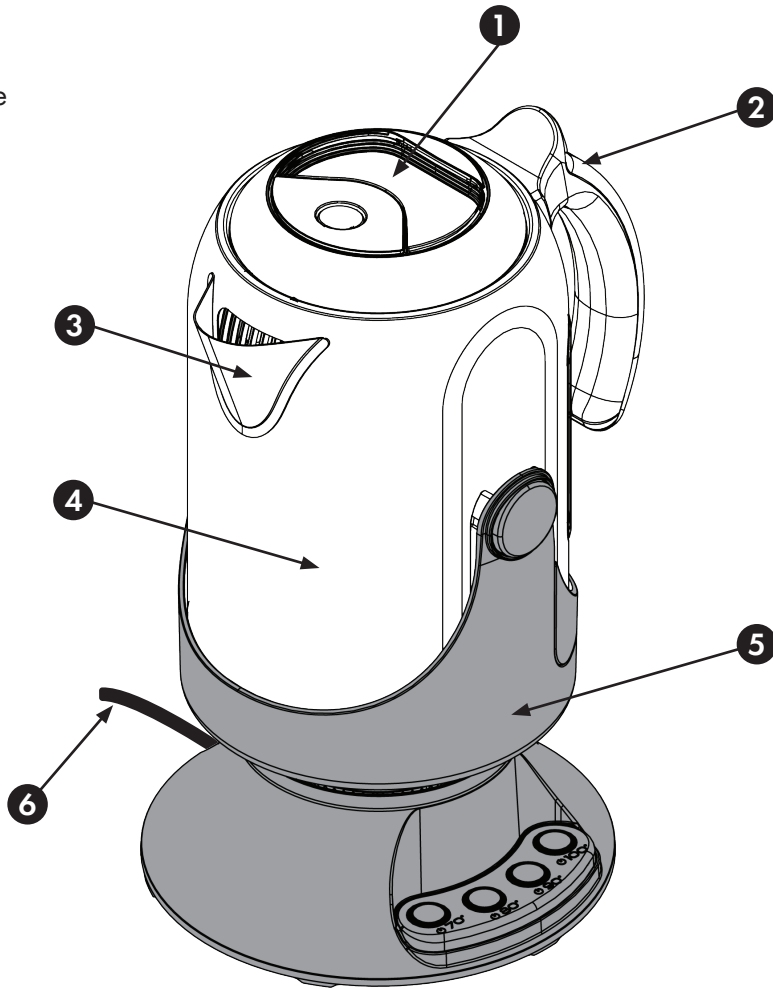
If the supply cord, plug or other parts are damaged, it must be replaced by the manufacturer, its service agent or similarly qualified persons in order to avoid a hazard.

- This appliance is not intended for use by persons (including children) with reduced physical, sensory or mental capabilities, or lack of experience and knowledge, unless they have been given supervision or instruction concerning use of the appliance by a person responsible for their safety.
- This appliance can be used by children aged from 8 years and above if they have been given supervision or instruction concerning use of the appliance in a safe way and if they understand the hazards involved. Cleaning and user maintenance shall not be conducted by children unless they are older than 8 years and supervised. Keep the appliance and its cord out of reach of children aged under 8 years.
- This appliance is intended to be used in a household and similar applications such as:
  - Staff kitchen areas in shops, offices and other working environments.
  - By customers in hotels, motels and other residential type environments.

# KNOW YOUR GILIA KETTLE

## MAIN PARTS

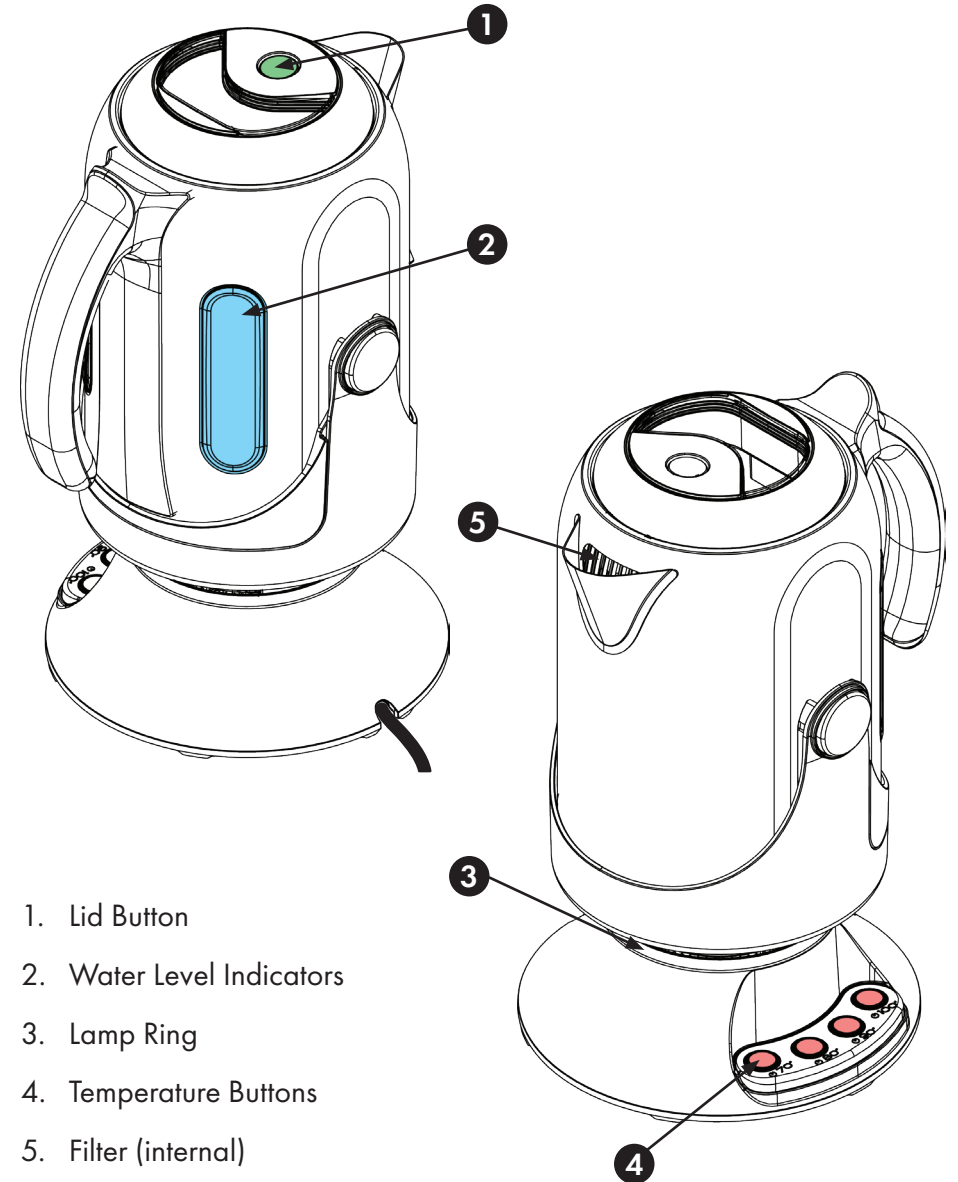
1. Lid
2. Handle
3. Spout
4. Kettle
5. Base
6. Cord



Product Dimensions: 310 H x 225 W x 180 D  
Technical Specifications: AC 220-240V | 50-60HZ | 1850-2200W  
Product Material: Combination Stainless Steel and Plastic  
Included Accessories: Pour Pad

# KNOW YOUR GILIA KETTLE

## KETTLE PARTS



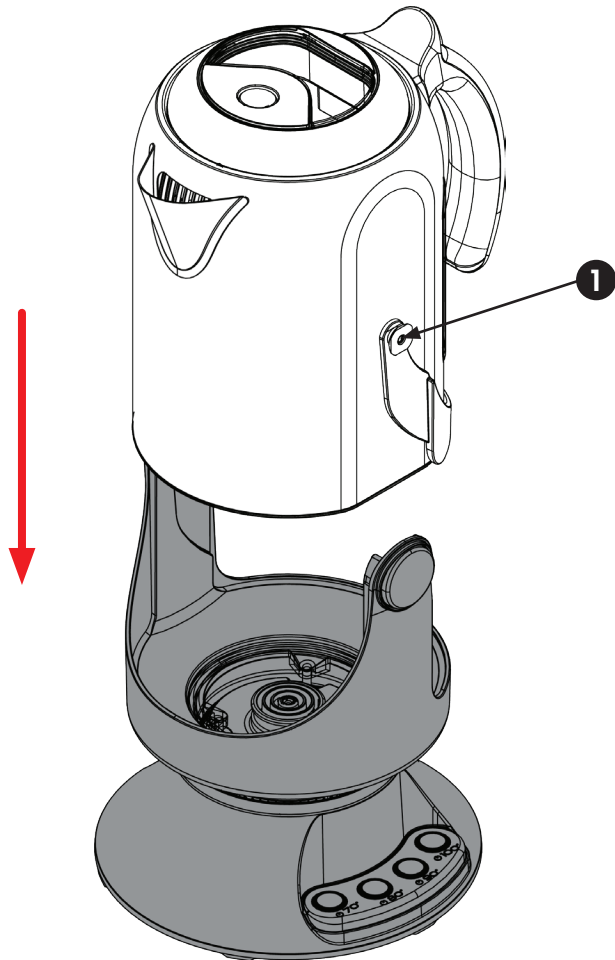
1. Lid Button
2. Water Level Indicators
3. Lamp Ring
4. Temperature Buttons
5. Filter (internal)

# KNOW YOUR GILIA KETTLE

## DETACHING FROM THE BASE

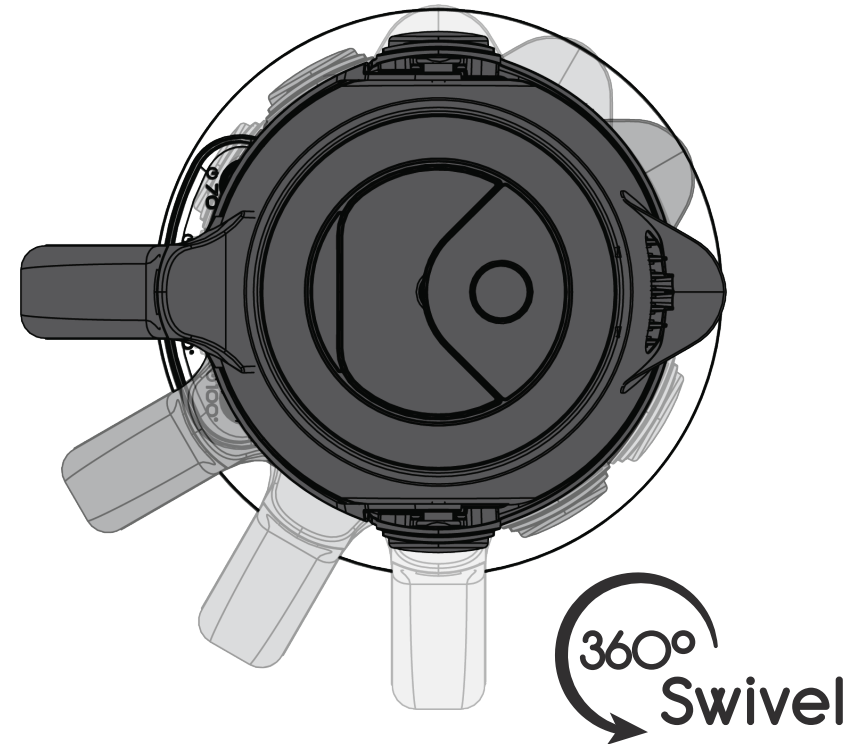
The Gilia Kettle can be lifted out of the Base and used independently for pouring and filling. The Kettle can only be boiled whilst sitting in the Base.

1. Pivot Pins



# KNOW YOUR GILIA KETTLE

## UNIT SWIVEL



# KNOW YOUR GILIA KETTLE

## SENSORY POUR POSITIONING



**Step 1**  
Place the Gilia Kettle on the Pour pad as shown.



**Step 2**  
Line up Kettle Base with the Pour Pad using the arrows as shown, ensure that arrows line up.

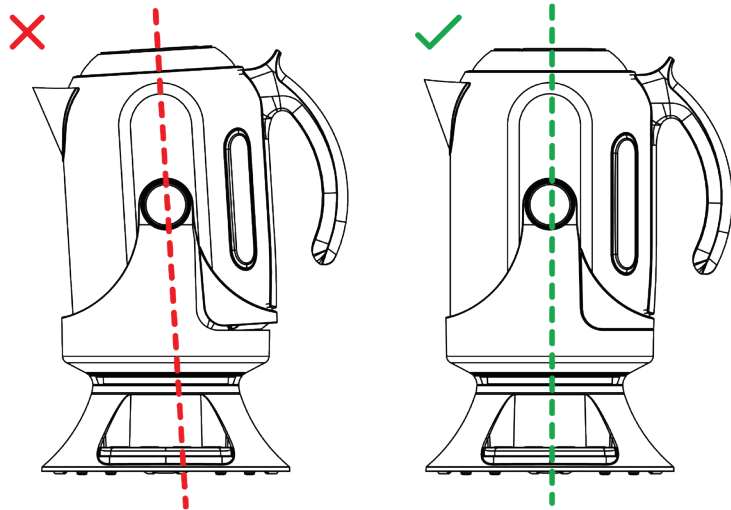
# KNOW YOUR GILIA KETTLE



The Gilia Kettle delivers a clicking sensation at each cup position, indicating where to pour. **(CAN BE USED FOR RIGHT AND LEFT HANDED POURING).**

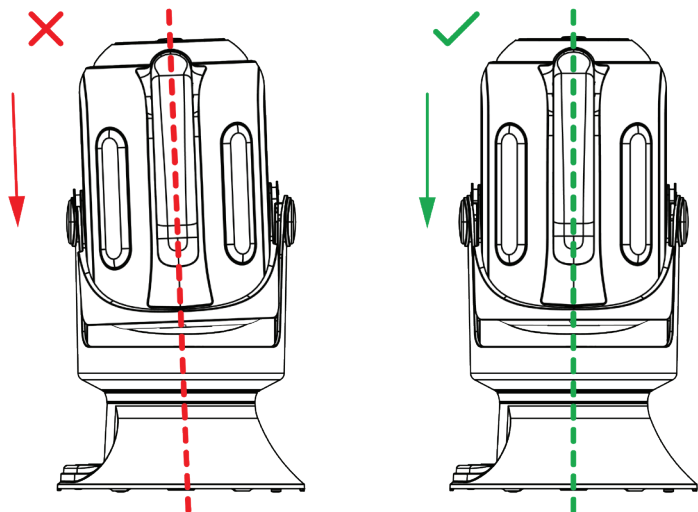
# KNOW YOUR GILIA KETTLE

## USING YOUR GILIA KETTLE



### Please Note:

Before using your Gilia Kettle, ensure that it is upright and securely engaged in its cradle.



# OPERATION

## BEFORE INITIAL USE

If you are using the Gilia Kettle for the first time, it is recommended that you clean your Gilia Kettle before use by boiling a full kettle of water once and then discarding the water. Wipe the outside surface with a damp cloth.

**Note:** The maximum capacity of the Kettle is 1.5L.

## OPERATION OF YOUR GILIA KETTLE

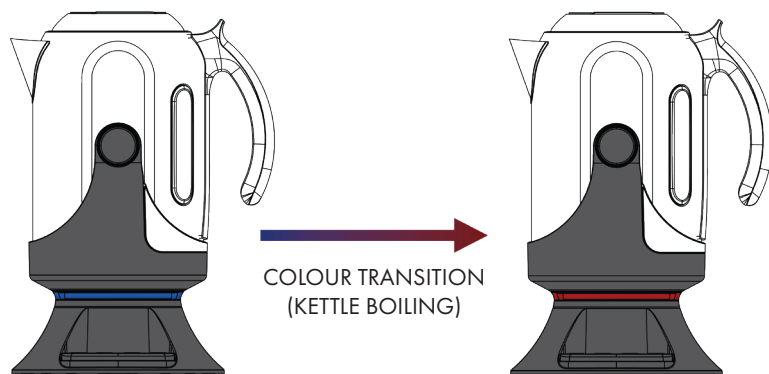
1. Fill the Gilia Kettle with an appropriate amount of room temperature filtered or tap water. The water level should be between the maximum and minimum water level scales inside the Gilia Kettle.

**Note:** Do not overfill the water over the maximum level as water may spill out of the spout when boiling.

2. Close the Kettle Lid and place the Kettle vertically downwards on the Power Base. Ensure that the Pivot Pins on both sides of the Kettle align with the slot on the Base, and then insert the Power Plug into the main power socket.
3. When you plug the Gilia Kettle into the power source the following procedures happen at the same time.
  - i. All four Buttons will light up for two seconds,
  - ii. The Ring Light will light up Blue for two seconds,
  - iii. An audible beep will sound for two seconds and the Gilia Kettle enters Standby Mode.
4. The Gilia Kettle remains in Standby Mode waiting to be boiled (all lights are off).

## OPERATION

5. Press the desired Temperature Setting Button, the corresponding Button will illuminate white and the Lamp Ring will illuminate blue. The Kettle will begin to boil water.
  - i. During the water boiling process, the water temperature gradually increases, and the colour of the Lamp Ring changes from all blue to a blue-red mix and finally to all red, and the brightness will alternate between high and low.



- ii. When the Kettle is finished boiling water, a “Beep” sound will be heard.
  - iii. Place an empty cup with a height of no more than 9cm next to the Base or on the Pour Pad. After the Kettle is heated hold the handle of the Kettle, slowly rotate the Body, and pour the Kettle with the spout aligned with the empty cup.
6. The Lamp Ring indicator program after boil:  
Stage 1: Red light indicates for 3 minutes;  
Stage 2: Over a period of 60 minutes the red light transitions to purple (indicating the Kettle is still warm);  
Stage 3: After 60 minutes, the light will turn off and the Kettle will go into a Standby Mode.
7. Unplug the power cord when the appliance is not in use.

## BOIL-DRY PROTECT

If the Gilia Kettle is operated without water accidentally, the boil-dry protection will automatically switch off the power. If this occurs, allow the Gilia kettle to cool before filling with cold water or before boiling again.

## CLEANING AND MAINTENANCE

Always disconnect the appliance from the power outlet and let it cool down before cleaning. Never immerse the Gilia Kettle, Power Cord or the Base in water or allow moisture to contact with these parts.

**CAUTION:** Do not use chemicals, steel, wooden or abrasive cleaners to clean the appliance.

1. Wipe the outside of the Kettle Body with a damp cloth or cleaner, then dry with a dry cloth.
2. When not in use or in storage, the Power Cord can be wound under the bottom of the Kettle.

## REMOVAL OF MINERAL DEPOSITS

Your Gilia kettle should be periodically descaled as the mineral deposits in tap water may form scale on the bottom of the Kettle which may cause less efficiency. You can use a commercially available descaler and follow the instructions on the package of the de-scaler. Alternatively, you may follow the below instructions using white vinegar.

1. Fill the Gilia Kettle with 3 cups of white vinegar, then add water to cover the bottom of the Kettle completely. Leave the solution in the Kettle overnight.
2. Discard the mixture in the Kettle, then fill the Kettle with clean water to the maximum level. Boil and then discard the water. Repeat several times until the odour of vinegar has been flushed away. Any stains remaining inside the Spout can be removed by rubbing with a damp cloth.

## CLEANING THE BASE

Wipe the housing of Base with a mild detergent and damp cloth.

## CLEANING THE FILTER

Remember, from time to time, to clean the filter with mild detergent and a damp cloth. The filter can be detached for easier cleaning simply by pulling it out. To re-attach, insert the filter into the support bracket.

## STORAGE

When not in use or in storage, the Power Cord may be wound around the cord storage under the bottom of the Gilia Kettle.

## ENVIRONMENTALLY FRIENDLY DISPOSAL



You can help protect the environment!  
Please remember to respect local regulations:  
hand in the non-working electrical equipment to an appropriate  
waste disposal center.

## SPARE PARTS

For spare parts and repairs contact the distributor in your region.

## TESTING STANDARDS

This product has been tested and is compliant with AS/NZ 3820.

## WARRANTY

PRODUCT	WARRANTY PERIOD
Gilia Kettle and Accessories	24 months

1. K Care Healthcare Solutions provides consumers with the following warranty in relation to this Product, in addition to complying with the requirements of any relevant legislation, including the Competition and Consumer Act 2010 (Cth) in Australia and the Consumer Guarantees Act 1993 in New Zealand (the Acts), except where a New Zealand consumer acquires the Product for the purposes of a business. The benefits to the consumer given by this warranty are in addition to other rights and remedies of the consumer under the applicable Act.
2. In this warranty, we have used the following definitions:
  - a. **Form** means a Warranty Claim Form issued by K Care Healthcare Solutions in respect of Products.
  - b. **K Care Healthcare Solutions** or **our** means K Care Healthcare Solutions Pty Ltd, ABN 47 159 431 099 of 165 Ninth Street, Mildura, VIC, 3500.
  - c. **Products** means the goods manufactured by K Care Healthcare Solutions (including products manufactured by its contract manufacturers) set out in the table above;
  - d. **Material** means a material or component used by K Care Healthcare Solutions in the manufacture of the Products;
  - e. **Retailer** means the authorised dealer of Products from whom the Product was purchased;
  - f. **Warranty Period** means the period within which a defect must appear as set out in the table above, commencing from the date of purchase of the relevant Product. If the Product or part (as the case may be) is repaired or replaced, there will be no extension to the original warranty period; and
  - g. **Workmanship** means the handling, assembly and manufacturing processes performed by or on behalf of K Care Healthcare Solutions in order to manufacture the Products.
3. K Care Healthcare Solutions warrants that for the duration of the Warranty Period, all Products will be free of faults arising from defects in Workmanship or Materials, on the terms and conditions set out in this warranty.
4. K Care Healthcare Solutions undertakes that if during the Warranty Period any Product, or any part of a Product, has failed to operate correctly due to faulty Workmanship or defective Material, it will repair or replace the Product or part (as the case may be) free of charge (excluding freight fees if applicable) provided that the following procedure is met:
  - a. The consumer must contact the Retailer or K Care Healthcare Solutions upon becoming aware of any defect to a Product. The consumer will then be provided with a Form, which must be completed by the consumer and returned to K Care Healthcare Solutions at the address, facsimile number or email address stated below together with satisfactory proof of purchase.

# WARRANTY

- b. K Care Healthcare Solutions will review the completed Form to determine whether there is a defect, and if so K Care Healthcare Solutions agrees to (at its option) repair, replace or supply equivalent goods, or pay the cost of any of those remedies to the consumer.
  - c. If K Care Healthcare Solutions requests the return of the applicable Product or part, the consumer will be responsible for the collection and freight costs of returning that Product or part to K Care Healthcare Solutions.
  - d. The consumer acknowledges that it is also responsible for the freight costs to deliver any new Product or replacement part to it.
5. To the extent that the supply of Products is a supply to a consumer within the meaning of the applicable Act, the consumer is entitled to consumer guarantees under the applicable Act which K Care Healthcare Solutions does not exclude, restrict or modify. In all other respects, and to the extent permitted by law, K Care Healthcare Solutions:
- a. Limits its liability for any non-excludable condition or warranty to rectifying any defect at its option, as set out in paragraph 4(b); and
  - b. Excludes liability (whether express or implied) of any nature whatsoever for any consequential loss, damage or injury arising as a result of any fault in the Products.
6. This warranty does not extend to damage to Products which occurs during transit or transportation, or which is caused by any abuse, accident or improper installation, connection, use, adjustment or repair or use of goods otherwise than in accordance with instructions issued by K Care Healthcare Solutions.
7. The warranty on Products is waived if any addition or attachment to the Products do not have K Care Healthcare Solutions approval or are not sold as K Care Healthcare Solutions products. The Products are designed to perform specific tasks under established test loads and unauthorised attachments may produce stresses for which the design is not appropriate.
8. The following applies to consumers who purchased a relevant Product in Australia:  
*Our goods come with guarantees that cannot be excluded under the Australian Consumer Law. You are entitled to a replacement or refund for a major failure and compensation for any other reasonably foreseeable loss or damage. You are also entitled to have the goods repaired or replaced if the goods fail to be of acceptable quality and the failure does not amount to a major failure.*

**Contact information:**  
K Care Healthcare Solutions  
836A Fifteenth Street  
Mildura, VIC, 3500  
Australia

Telephone: 1300 783 783  
Facsimile: 1300 784 784  
Email: customerservice@kcare.com.au



Name: \_\_\_\_\_  
Address: \_\_\_\_\_  
\_\_\_\_\_  
Suburb: \_\_\_\_\_  
State: \_\_\_\_\_  
Phone: \_\_\_\_\_  
E-mail: \_\_\_\_\_  
Model Purchased: \_\_\_\_\_  
Date Purchased: \_\_\_\_\_  
Serial No: \_\_\_\_\_  
Store Purchased: \_\_\_\_\_  
Store Suburb: \_\_\_\_\_

To assist us in bringing you the product features that you want, we would also be grateful if you could complete the following short questionnaire.

1. Is this the first Gilia product you have ever owned?  
\_\_\_\_\_  
\_\_\_\_\_
2. What were the TWO most important factors influencing the choice of this product?  
\_\_\_\_\_  
\_\_\_\_\_  
\_\_\_\_\_
3. What was the main reason for the purchase?  
\_\_\_\_\_  
\_\_\_\_\_
4. Would you like to receive additional information about Gilia products and new developments? Circle option  
YES / NO







Email: [customerservice@kcare.com.au](mailto:customerservice@kcare.com.au)

Telephone: 1300 783 783

Facsimile: 1300 784 784

K Care Healthcare Solutions

836A Fifteenth Street

Mildura, VIC, 3500

Australia



Designed by  
Form Designs Australia

Scan QR CODE for  
more information

